



NILMANI
INDUSTRIES

Innovation From Passion



NILMANI INDUSTRIES

Manufacturer & Exporter of

Fly Ash Hydraulic Brick Press, Vibro Machine for Concrete Block & Pavers

30 Meldi Estate , Maniprakash premises, Near Meldi temple, West cost road , Gota, Ahmadabad
Web : www.flyashmachine.co.in, E-Mail : nilmani5717@hotmail.com M : 9327491268,9427608631

NILMANI INDUSTRIES

Manufacturer & Exporter of

Fly Ash Hydraulic Brick Press, Vibro Machine for Concrete Block & Pavers



NILMANI INDUSTRIES

60 TON HYDRAULIC FLY ASH BRICK MACHINE

- Production capacity - 10000 Brick/shift (85%)
- Brick/stroke -4 , Cycle / Minit -6.5
- Tonnage pressure -60Ton , 15 Ton / Brick
- Total H.P.-27.5 HP
- Power pack Motor -10HP, Pan Mixer Motor -15 HP
- Power pack tank capacity -350litre
- Pan Mixer Batch Capacity -500 Kg
- Special Extra Nickle added NI Hard Scrapper in Pan Mixer
- Special shell company Hard palte use in Pan Mixer to prevent wear
- 4"HMI (Display) to set pressure and count brick /day and total production
- 8 Labour required
- Pallet size 600 x 300 x 12mm Thickness
- Mould liner made from EN 31 Material
- Available Brick size 9 x 4 x 3 , 10 x 5 x 3 , 190 x 90 x 90 , 10 x 5 x 4
- Land Require -1 acre or 40000 Sq feet
- Raw Material 55% Ash + 38% Sand + 7% OPC cement
- Optional Raw Material Lime, Zypsum, Stone Dust



100 TON HYDRAULIC FLY ASH BRICK MACHINE

- Production capacity - 20,000 Brick/shift (85%)
- Brick/stroke -6 , Cycle / Minit -6.5
- Tonnage pressure -100Ton , 100 Ton / Brick
- Total H.P.-45 HP
- Power pack Motor -15HP, Pan Mixer Motor -25 HP
- Power pack tank capacity -550litre
- Pan Mixer Batch Capacity -900 Kg
- Special Extra Nickle added NI Hard Scrapper in Pan Mixer
- Special shell company Hard plate use in Pan Mixer to prevent wear
- 4"HMI (Display) to set pressure and count brick /day and total production
- 14 Labour required
- Pallet size 810 x 300 x 12mm Thickness
- Mould liner made from EN 31 Material
- Available Brick size 9 x 4 x 3 , 10 x 5 x 3 , 190 x 90 x 90 , 10 x 5 x 4
- Land Require -1 acre or 40000 Sq feet
- Raw Material 55% Ash + 38% Sand + 7% OPC cement
- Optional Raw Material Lime, Zypsum, Stone Dust



NILMANI INDUSTRIES

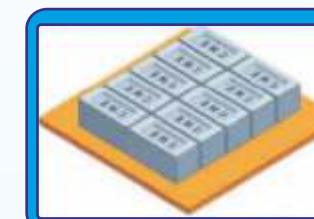


Model NMI 4 - 21 Flyash Brick Plant

Flyash Brick Output Pallet Size : 600x600 x 19 mm



Flyash Brick
9" x 4" x 3"
(230x110x75 mm)
(8) at a time
12,000 / Shift*



Flyash Brick
9" x 4" x 3" (on edge)
(230x110x75 mm)
(12) at a time
15,000 / Shift*



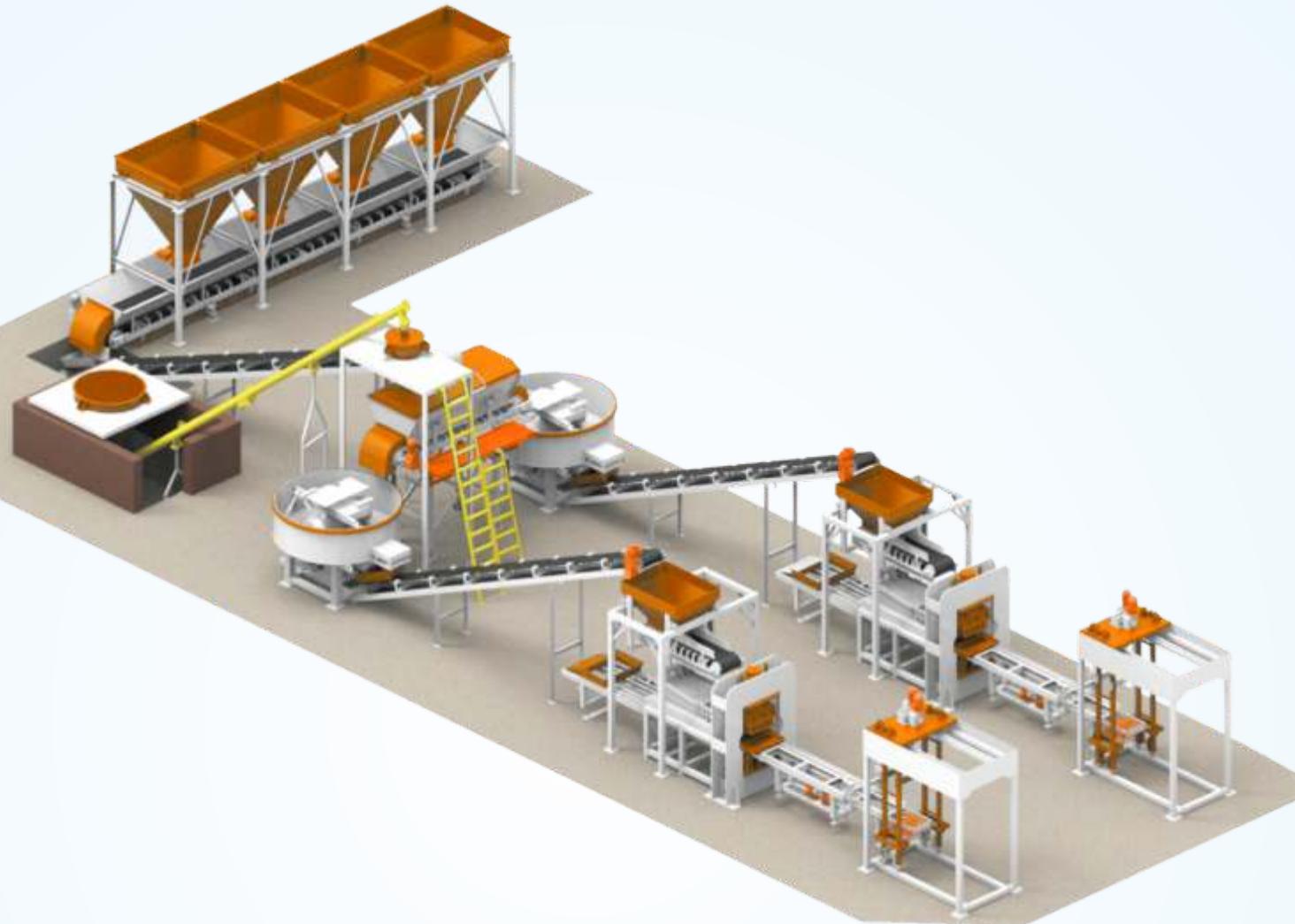
Flyash Brick
8" x 4" x 4"
(190x90x90 mm)
(10) at a time
15,000 / Shift*



Flyash Brick
10" x 5" x 3"
(250x120x75 mm)
(8) at a time
12,000 / Shift*



NILMANI INDUSTRIES



Double Line Mega Series

- 30,000 Bricks / Day
- 40,000 Bricks / Day
- 50,000 Bricks / Day
- 80,000 Bricks / Day

With Stacker, Batching Plant, Silo & Curing Chamber



NILMANI INDUSTRIES

PRODUCT WE ARE USING



OUR BUSINESS PARTNER





NILMANI INDUSTRIES

OTHER PRODUCTS



Green Brick Shifting Trolley



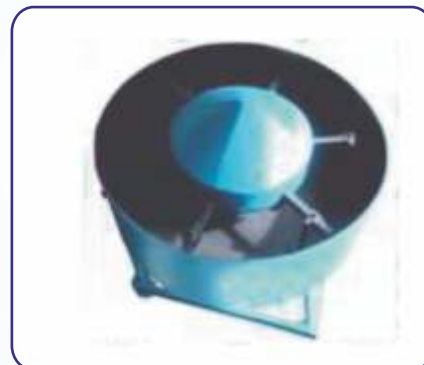
Shifting Pallet Truck



Brick Strength Testing Machine



Pan Mixer



Concrete Mixer



Wheel Barrow



Front Stacker



Color Mixer

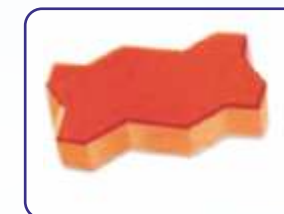
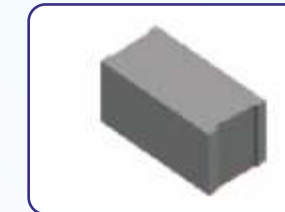
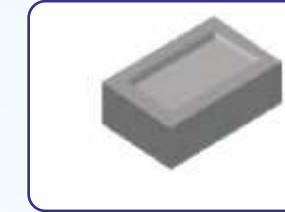
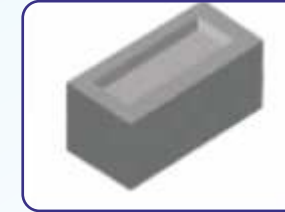
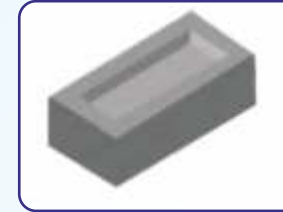


Vibrating Table



NILMANI INDUSTRIES

BRICKS, BLOCKS & PAVERS DESIGNS



-Leading India Company Incorporation Services agent with proven track record For more than a decade, Nilmani has assisted many local and international entrepreneur to incorporate thousands of companies in India.

-Satisfied Customers
We value the importance of customer support and continuously upkeep the service standard. We believe businesses would generate more businesses and proudly acknowledge that majority of our clients are through referrals.

-One Stop Solutions
With a comprehensive range of services under one roof, our clients are all well guided on setting up and managing their business in India with the minimum effort and time.

-In-house Professional Team
We have our strong in-house accountants and company secretary team that can provide full support to your business needs. We do not out-source our jobs and therefore are able to keep our fees low and achieving the efficiency and accuracy in our works.



Comprehensive Range Services
At Nilmani, we offer a comprehensive range of incorporate services to suit your business needs

Why Choose Nilmani

-Efficiency
Our professional team is all well-equipped with experience. your company incorporation can be done in less than 2 hours.

-No Hidden Extras
All our fees are transparent and all fees are mutually agreed upon prior to the commencement of any assignment. Some Service providers might offer low fees but with hidden costs and poor after-sales support that are too late to regret

-Competitive Pricing
Our fees are probably among the most competitive in the markets. We leverage our fees but we do not compromise with our service standard. This is possible only under a strong established management with more than twenty-year of business experience.